

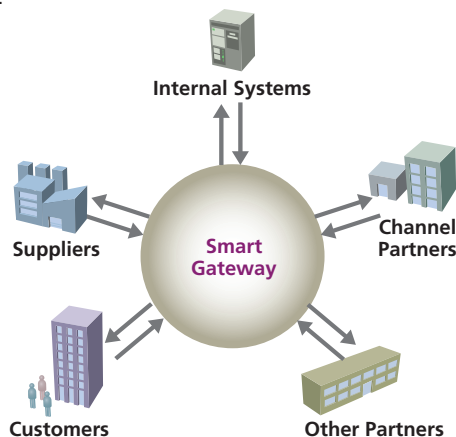
Smart Gateway™

Establish Visibility & Control Over External and Internal Electronic Transaction Document Exchange

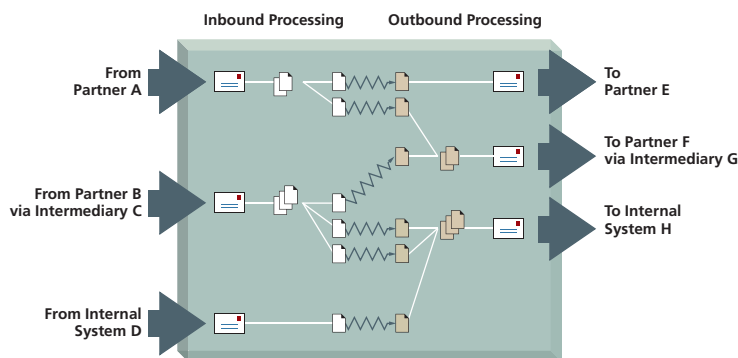


Smart Gateway is a business process application that centralizes the intake, validation, sorting, repackaging, routing, and tracking of electronic business documents exchanged across many external partners and internal systems. Orders, invoices, insurance claims, and various supply chain transactions are some examples of electronic documents that Smart Gateway can process.

By centralizing the business logic for all these processes into one specialized product, Smart Gateway dramatically cuts the integration complexity, cost, and modification time compared to maintaining this functionality across many different systems and point-to-point integrations. Another major benefit is far greater visibility and control over processes that cut across multiple applications and organizations.



With its ability to support frequently changing rules for document validation and routing, Smart Gateway is well-suited to manage high-volume flows of electronic documents across many external partners and/or internal applications. In addition, Smart Gateway can process multiple levels of aggregation in incoming and outgoing document packages.



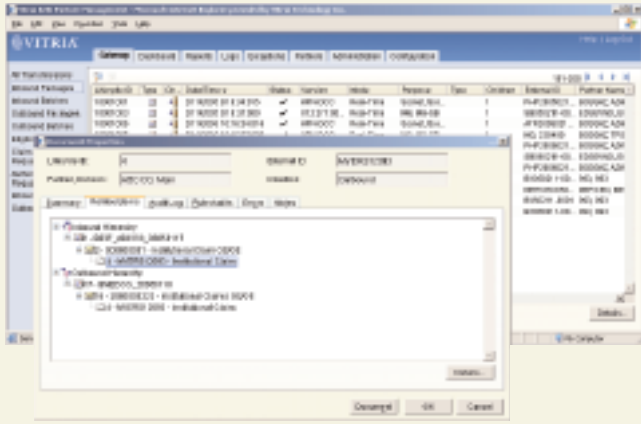
Smart Gateway can receive packages of electronic documents from multiple sources; extract envelope data and payloads; split payloads into individual documents; apply validation and transformation rules; sort and reaggregate processed documents; route, schedule, and deliver these to multiple destinations; and manage any electronic acknowledgements and responses.

Uses for Smart Gateway

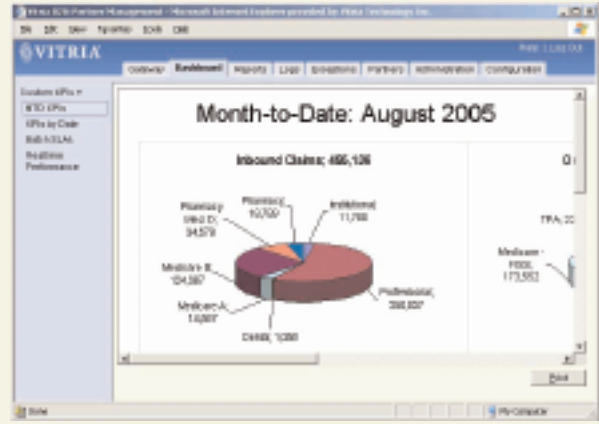
- ▶ **Order Management** – Combine orders from many sources into a single electronic document stream. Split, sort, recombine, and route orders (and parts of orders) to various internal systems and/or partners
- ▶ **Billing & Invoicing** – Consolidate data from multiple internal and external sources into combined billing or invoicing documents for each customer or partner
- ▶ **Insurance Claims** – Validate, sort, and route incoming insurance documents to appropriate internal systems and external parties with centralized control & reporting
- ▶ **Supply Chain Management** – Centralize processing, routing, and analysis of document data related to inventories, shipments, & demand forecasts

Smart Gateway Capabilities

- ▶ **Document Intake** – Receive electronic documents from many communication gateways & internal systems
- ▶ **Lifecycle Tracking** – Track all documents, packages, and envelopes at every step in the receive-process-route lifecycle
- ▶ **Acknowledgement** – Orchestrate receipt acknowledgement and acceptance dialogues with senders and receivers
- ▶ **Unwrapping** – Extract and separate envelope information and payload data
- ▶ **Disaggregation/Splitting** – Split document packages into individual items for separate processing and routing
- ▶ **Validation** – Validate sender, receiver, relationship, and document data against defined rules
- ▶ **Transformation** – Apply receiver-specific data transformations and translations
- ▶ **Sorting & Routing** – Select receiver and transport mode based on envelope data, document format, document data, & rules
- ▶ **Aggregation** – Bundle documents into packages based on time- or size-based batching preferences of each receiver
- ▶ **Scheduling** – Apply partner-specific rules for delivery based on frequency or volume
- ▶ **Response Management** – Associate and process response documents related to previously-sent documents
- ▶ **Auditing & Compliance** – Expose full history of all incoming and outgoing documents for reporting and analysis



Smart Gateway provides a unified view of document status, including inter-document relationships and processing history.



Sample dashboard using document exchange metrics tracked by Smart Gateway.

Smart Gateway's Service-Oriented Design

Smart Gateway is easier to implement and maintain partly due to its configurable Service Managers. These reusable components can significantly reduce the solution complexity faced by IT organizations.

Document Manager	Stores & retrieves XML documents & payloads in a document repository. Manages association with incoming & outgoing packages, envelopes, & documents.
Validation Manager	Provides process models with a common service for validating XML documents against schema definitions and XQuery validation rules.
Routing Manager	Manages XQuery rules used by process models for routing business documents. Rules can be based on any XML data extracted from payloads and partner registry settings, including sender, receiver, relationship, & document format
Registry Manager	Provides an extensible central repository for data on external partners & relationships among partners. Allows clients to add, retrieve, update, & delete data.
Exception Manager	Handles business-level exceptions flagged for resolution or user alerts outside Smart Gateway. Also manages interactions with Resolution Accelerator™, Vitria's specialized product for business process exception management.
Logging Manager	Provides full status views and data access for all packages, envelopes, and documents (including links to any related items). Also logs processing & rule execution data for reporting & debugging.

Because Smart Gateway is built on Vitria's proven business process integration platform, users can leverage the platform's extensive support for creating, using, integrating, and managing service components.

Five Reasons to Select Smart Gateway

1. Greater Process Visibility and Control

Smart Gateway tracks document status across the entire intake-validation-routing-response lifecycle, and provides both real-time and historical views.

2. Specialized Solution Cuts Complexity & Costs

Smart Gateway centralizes document intake, validation, splitting, sorting, reaggregation, and routing to avoid the operational burden and risk of maintaining this logic across multiple systems.

3. Rules-based Validation and Routing Simplifies Implementation and Maintenance

Smart Gateway supports easily-modified rules based on sender, receiver, relationship, document format, and other factors.

4. Extensible Solutions are Easily Customized

Smart Gateway gracefully accommodates implementation-specific logic for document validation, transformation, and other operations.

5. Proven Process Integration and Interoperability

Smart Gateway leverages Vitria's proven business process integration platform for application connectivity, data transformation, process management, and trading partner management.



945 Stewart Drive, Sunnyvale, CA 94085
 Tel: +1 (408) 212-2700 Email: info@vitria.com
 vitria.com