



# MODEL » MONITOR » MANAGE » OPTIMIZE



## OVERVIEW

Your business is highly competitive. You have to achieve faster time-to-market and provide better service than your competitors. But, your business processes are complex, information is scattered, and unexpected events are constant. You need a solution that promotes efficiency, visibility, and predictability into your business processes and governance policies. Vitria M<sub>3</sub>O BPMS combines the rich features of Web 2.0 technology, BPMN, and Event-driven Architecture (EDA) to enable the next generation of BPMS for both Business and IT Analysts. Business Analysts can easily design their business processes and IT can collaborate with business users to complete the model. The model is the application – BPMN is interpreted and executed directly.

### Web 2.0-based, Rich Collaborative User Experience

M<sub>3</sub>O BPMS is a responsive Rich Internet Application (RIA) incorporating Web 2.0 features for ease of use and enhanced collaboration, chat, threaded discussions, and annotations. The product is browser-based, with a zero-install footprint, and can be deployed to any number of users. Business and IT analysts can share process components and metadata while working together on the same models.

### Role-Based Modeling

M<sub>3</sub>O BPMS provides a business-friendly, easy-to-use interface empowering business analysts with a workspace tailored specifically for them with business steps and vocabularies. IT users have IT views and capabilities that support necessary IT functions, presented within the same unified environment. The product has active support for multi-role collaboration with appropriate notifications, dependencies, impact analysis, and exploration. The shareable model and knowledge repository stores models, schemas, and other metadata. Users are assigned roles and privileges allowing access to only the relevant models, views, and information during the collaboration process.

### Powerful Workflow Environment

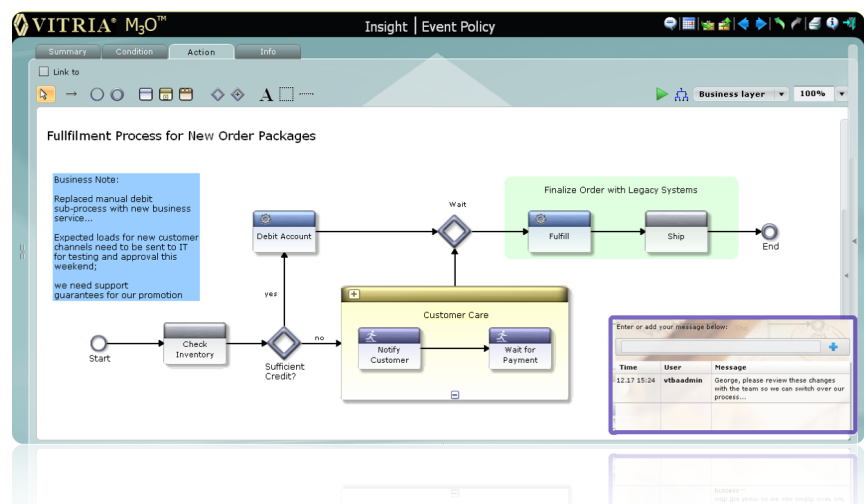
M<sub>3</sub>O BPMS provides a unified modeling environment that supports automated processes and rich human-oriented workflows. M<sub>3</sub>O BPMS allows you to directly model complex human-based workflow consisting of multiple steps and worker interactions, and to combine common business workflows into reusable business steps. A WYSIWYG Form Designer allows you to easily lay out page formats and flows dynamically customized based on task data and worker assignment. You can also manage workgroups and work assignment rules, and create flexible assignment policies based on your business schedule.

### BPMN Model-Driven Execution

M<sub>3</sub>O BPMS supports a fully unified design and runtime environment. The BPMN models built in the collaborative modeling environment are interpreted and executed directly by the M<sub>3</sub>O Server. Models are stored in a common repository that supports the definitions of metadata elements while automatically maintaining the relationships between these elements. Runtime is dynamically adjusted based on model changes.

## MODEL, MONITOR, MANAGE, AND OPTIMIZE YOUR PROCESSES TO MEET YOUR BUSINESS CHALLENGES

- ➔ **Web 2.0-based, rich user experience** to support collaboration between Business and IT Analysts
- ➔ **Role-Based Modeling** to empower Business and IT
- ➔ **BPMN Model-Driven Execution** for dynamic standards-based BPM
- ➔ **Powerful workflow environment** for optimal workforce productivity



M<sub>3</sub>O BPMS integrates seamlessly as part of Vitria M<sub>3</sub>O Suite, providing enhanced business insight with top-down, end-to-end management of the entire business process. Complementary suite components provide greater insight into comprehensive processes and let you to model, manage, monitor, and optimize your business operations to meet your business challenges.

## WEB 2.0 RICH INTERNET APPLICATION

- » Rich visualization of models and execution
- » Zero-install footprint on client
- » Runs on premise or in a cloud

## UNIFIED MODELING ENVIRONMENT

- » Role-based Modeling
- » Shareable Model and Knowledge Repository
- » Model Lifecycle Management

## ROLE-BASED MODELING

- » Task-specific work spaces supporting different views for different roles
- » In-context user interfaces and operations processes
- » Role-based access control and privileges
- » Layered annotations based on roles

## MODEL-DRIVEN EXECUTION

- » Common repository for shared metadata
- » Definition and automatic maintenance of metadata relationships
- » Dynamic adjustments of runtime based on model changes

## COLLABORATION

- » Business- and IT-specific views of shared models
- » Team-based messaging
- » Role-based design notes

## WORKFLOW

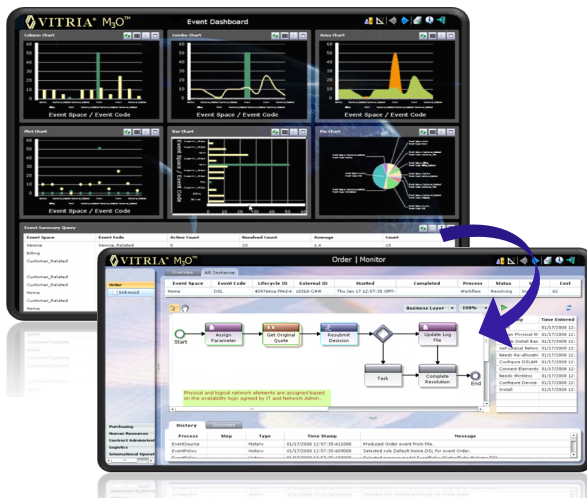
- » Rule-based assignment of multi-step tasks
- » Form Designer for user interactions
- » Integration with email and business calendar

## SIMULATION

- » Performance profiling
- » Activity-based costing
- » Bottleneck analysis

## BUSINESS ACTIVITY MONITORING AND PROCESS INTELLIGENCE

- » Monitor and analyze business process progress in real time
- » Drill down in context into selected business process status
- » Explore process execution history at any level of detail
- » Replay process history and animate process models



## Supported Standards

- » BPMN, WFMC
- » Adobe Flex
- » J2EE, WS-\*, WS-I, XML, XSD
- » Connectivity: HTTP/s, FTP/s, RDBMS, and connectors to Oracle, SAP, and other major application vendors

## SYSTEM REQUIREMENTS

### Platforms

- » Microsoft Windows
- » Red Hat Linux
- » Sun Solaris
- » HP-UX
- » Amazon Elastic Compute Cloud

### Databases

- » Oracle
- » MySQL
- » PostgreSQL

## About Vitria

Vitria Technology, Inc. is the industry's leading privately-held BPMS and integration technology company. The company has a rich heritage as a pioneer of BPMS that spans more than a decade. Vitria's award-winning process integration solutions provide the backbone for many Global 2000 companies' mission-critical business processes. Vitria has customers in North America, South America, Europe, Asia, and Australia.

## Vitria Technology, Inc.

945 Stewart Drive, Sunnyvale, CA 94085  
 Tel: +1 (877) 365-5935  
[moreinfo@vitria.com](mailto:moreinfo@vitria.com)  
[www.vitria.com](http://www.vitria.com)

For more information on how Vitria M<sub>3</sub>O BPMS can make a positive impact on your business, contact a Vitria expert at +1 (877) 365-5935 or [moreinfo@vitria.com](mailto:moreinfo@vitria.com)